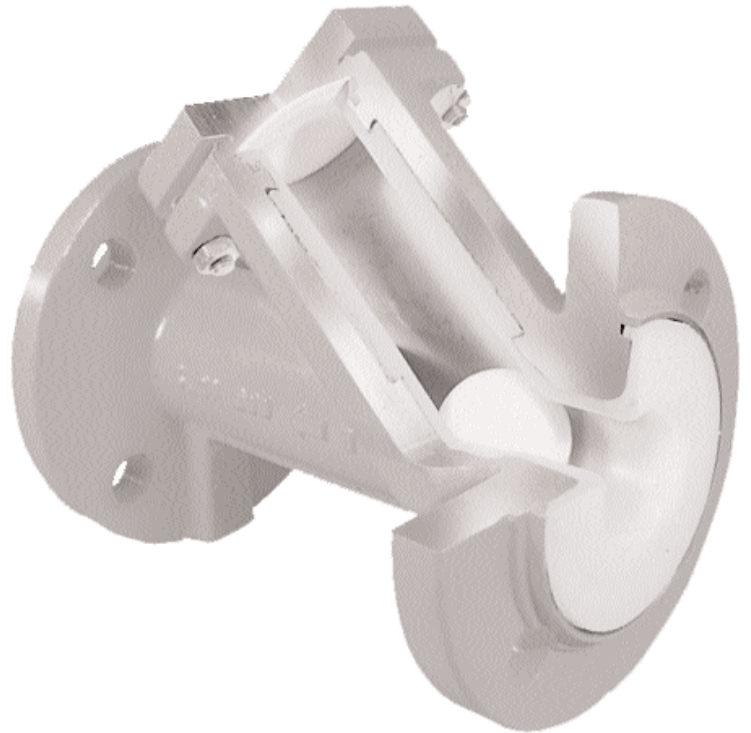


071 45° Ball Check Valve

Sizes 1 through 4 inch, ANSI Class 150

The unique construction of the Tuflite 45° ball check valve permits unobstructed flow through the valve as the ball rides in a 45° guide, out of the path of the media. The valve provides a large Cv coefficient. A tight seal against backflow is assured. It can be mounted horizontally or vertically with upward flow.

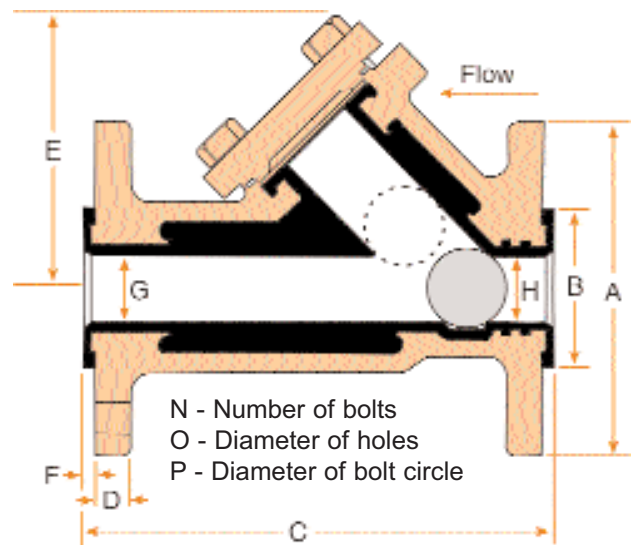
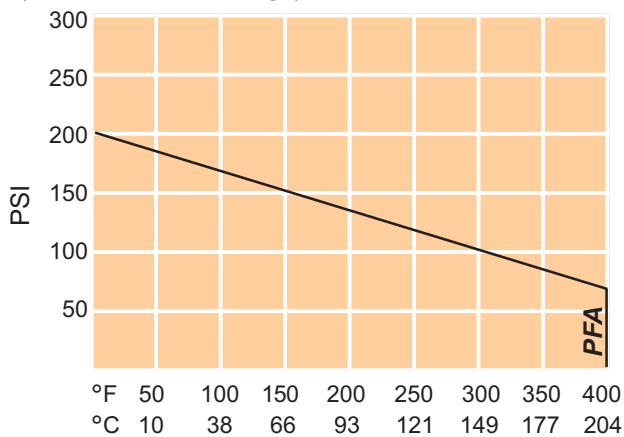


Materials Of Construction

Body	PFA lined ductile iron
Cover	Ductile iron
Diaphragm	PTFE
Ball	Glass-filled PTFE
Cover bolts	B7 Carbon steel

Pressure-Temperature Ratings

(Valves with PFA linings)



Maximum allowable $\Delta P = 200$ psi.

Cv Factors

Size	1	1½	2	3	4
	23	54	87	222	525

Dimensions (inches)

Size	A	B	C	D	E	F	G	H	N	O	P	Wt. lbs.	Approximate pressure (psi) to unseat (ΔP)		Approximate pressure (psi) to seat (ΔP)		Back pressure (psi) to seal (ΔP)	Allowable leakage rate @ 80 psi
													Horiz. pipe	Vert. pipe	Horiz. pipe	Vert. pipe		
1	4.25	2.00	6.00	.44	3.50	.13	.88	.78	4	.63	3.13	8	0	Less than 1	10	0	50	30 bubbles/minute
1½	5.00	2.88	7.00	.56	4.00	.13	1.25	1.13	4	.63	3.88	13	0	Less than 1	20	0	50	60 bubbles/minute
2	6.00	3.63	8.69	.63	5.25	.13	1.63	1.63	4	.75	4.75	23	0	Less than 1	30	0	50	
3	7.50	5.00	10.00	.75	6.38	.15	2.50	2.25	4	.75	6.00	42	0	Less than 1	50	0	50	
4	9.00	6.18	13.78	.75	8.86	.27	3.74	3.70	8	.75	9.00	52	0	Less than 1	55	0	50	